

SSFA comparison

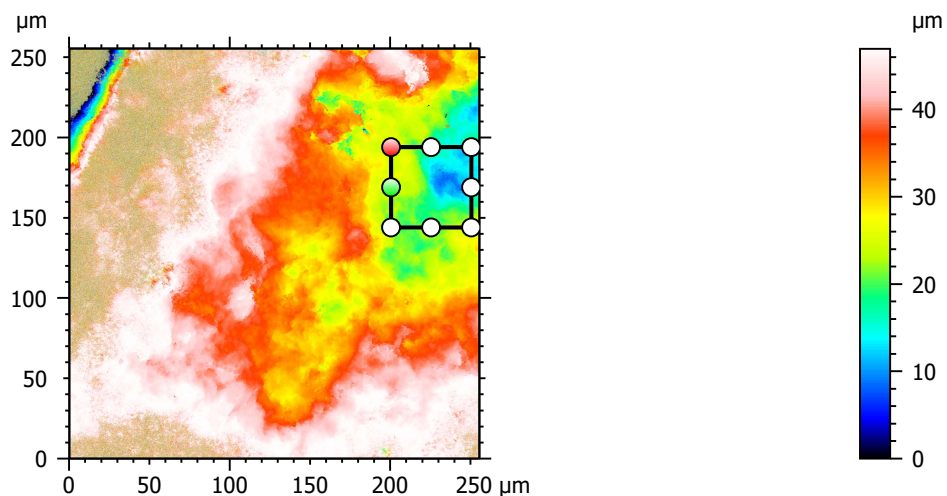
Template to process all lithic surfaces acquired with the Zeiss LSM 800 with the 50x/0.95 objective.

A. Processing

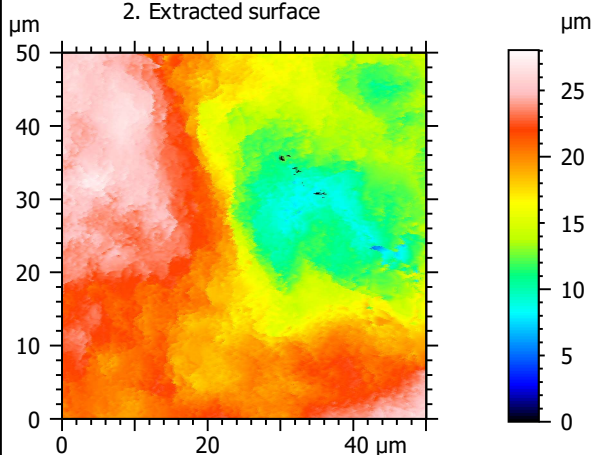
Identity card

Name:	FLT3-8_LSM_50x-0.95_20190321_Area1_Topo		
File path:	D:\Data\3Ddata\SSFA\Lithics\Original surfaces\FLT3-8_LSM_50x-0.95_20190321_Area1_Topo.sur		
Created on:	3/21/2019 11:34:42 AM		
Studiable type:	Surface		
Axis:	X		
Length:	255.5	µm	
Size:	3000	points	
Spacing:	0.08519	µm	
Axis:	Y		
Length:	255.5	µm	
Size:	3000	points	
Spacing:	0.08519	µm	
Axis:	Z		
Layer type:	Topography		
Length:	46.95	µm	
Size:	65534	digits	
Spacing:	0.0007164	µm	
NM-points ratio:	0.000 % (0 Pts)		

1. Acquired surface

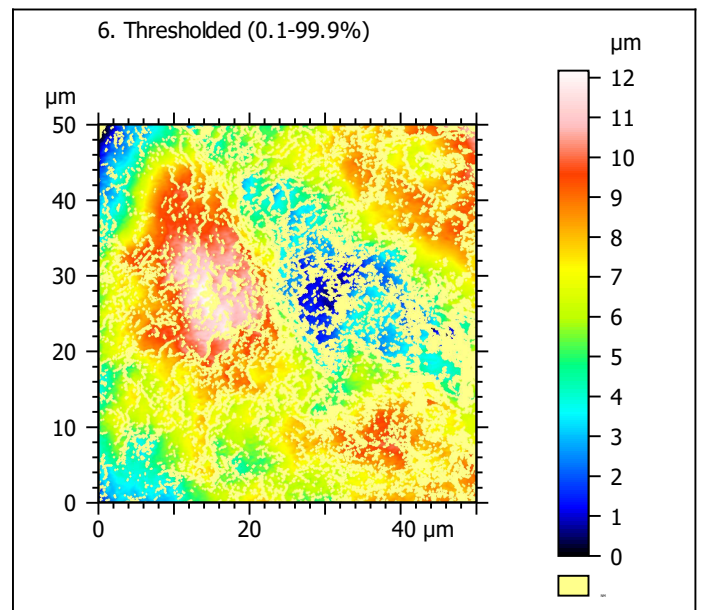
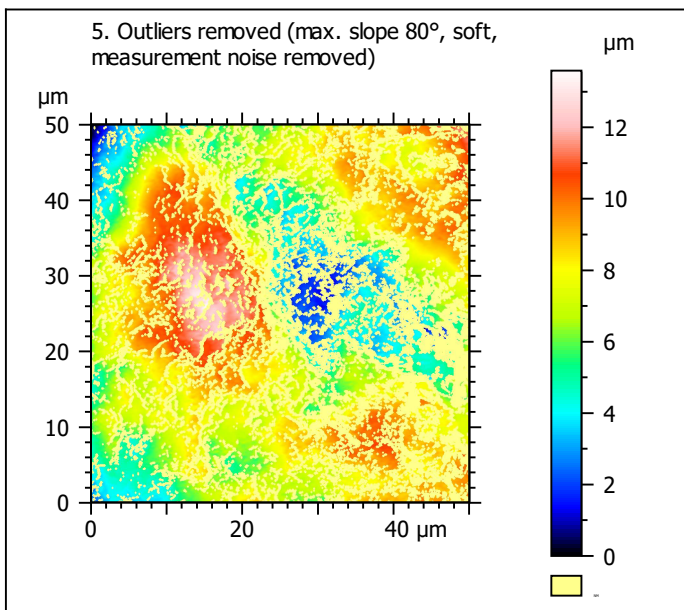
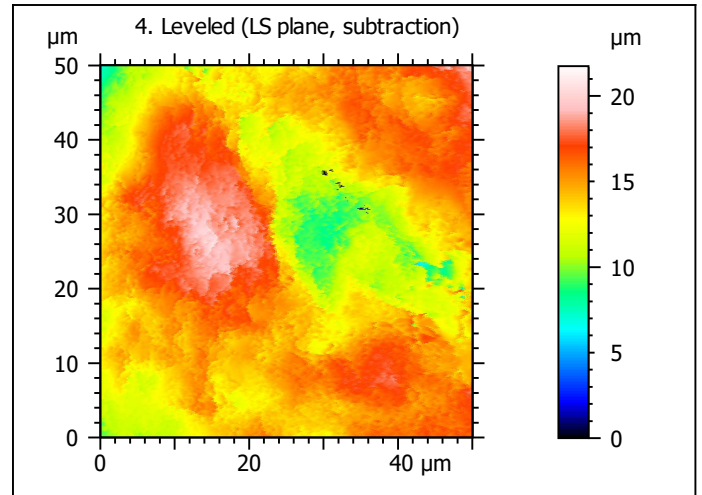
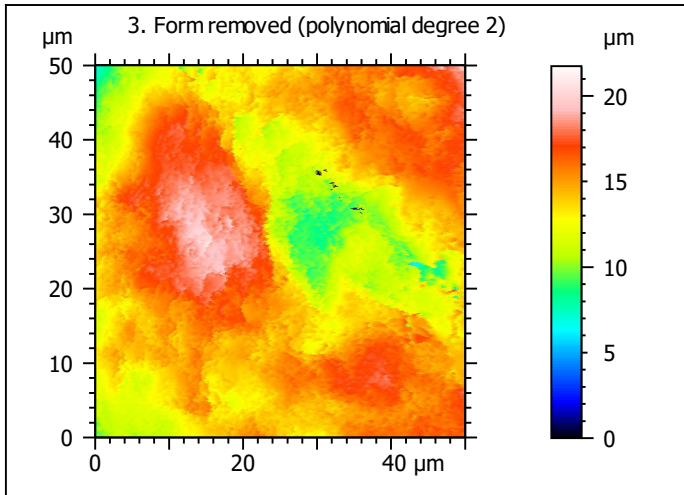


2. Extracted surface



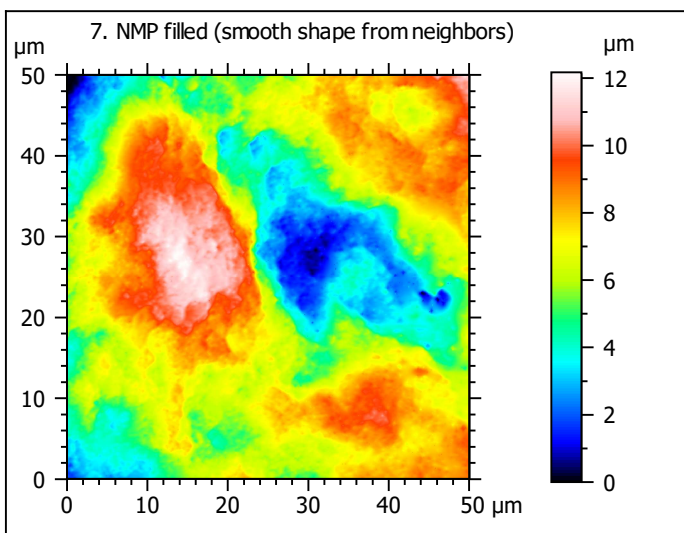
Identity card

Name:	FLT3-8_LSM_50x-0.9...opo > Extracted area		
Axis:	X		
Length:	50.00	µm	
Size:	588	points	
Axis:	Y		
Length:	50.00	µm	
Size:	588	points	
Axis:	Z		
Layer type:	Topography		
Length:	28.05	µm	
Size:	39153	digits	
NM-points ratio:	0.000 % (0 Pts)		

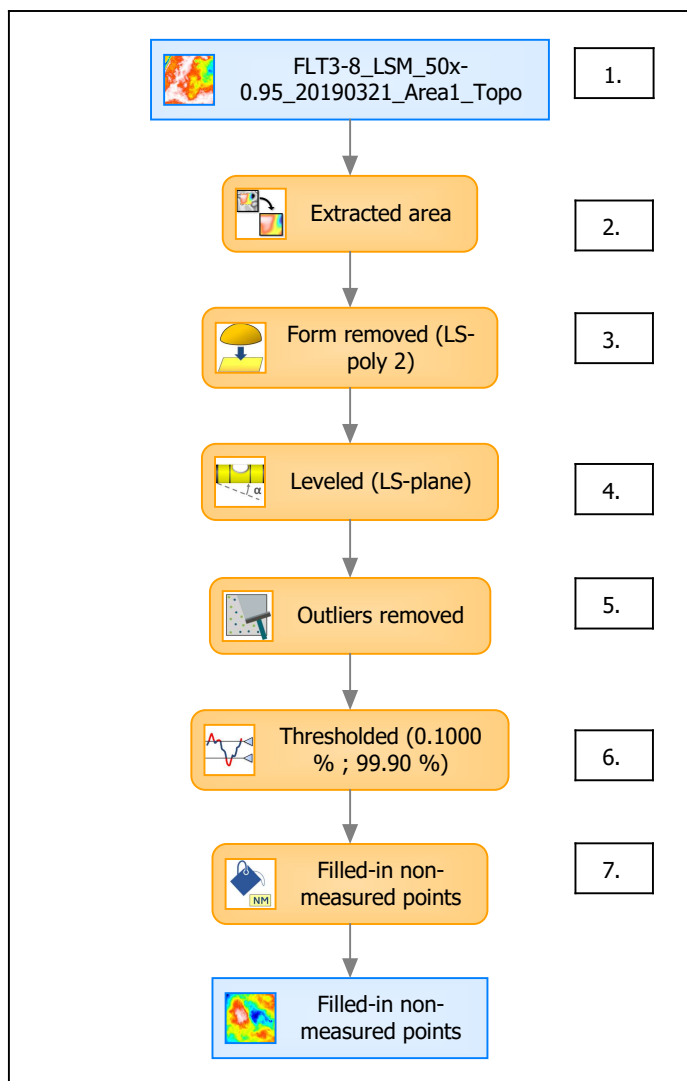


Identity card	
Name:	FLT3-8_LSM_50x-0.9...e) > Outliers removed
Axis:	Z
NM-points ratio:	45.65 % (157832 Pts)

Identity card	
Name:	FLT3-8_LSM_50x-0.9...0.1000 % ; 99.90 %)
Axis:	Z
NM-points ratio:	45.76 % (158207 Pts)



B. Summary



Identity card

Name: FLT3-8_LSM_50x-0.95_20190321_Area1_Topo > Extracted area ...resholded (0.1000 % ; 99.90 %) > Filled-in non-measured points

Studiabale type: Surface

Axis: X

Length: 50.00 μm
Size: 588 points
Spacing: 0.08519 μm

Axis: Y

Length: 50.00 μm
Size: 588 points
Spacing: 0.08519 μm

Axis: Z

Layer type: Topography

Length: 12.18 μm
Size: 16996 digits
Spacing: 0.0007164 μm

